

Disc handwheels, aluminium with revolving cylindrical grip, Form C with reamed hole and keyway

Item description/product images



Description

Material:

Handwheel aluminium.
Cylinder grip and hub cover black thermoplastic.
Cylinder grip pin black oxidised steel.
ISO 4027 grub screw, steel grade 45 H, black.

Version:

Black or silver powder-coated.

Note:

Wheel rim radial and axial run-out ≤ 0.4 mm.

Assembly:

The hub cover and the revolving cylinder grip are supplied unassembled. To assemble, screw the grip into the tapped hole.
The handwheels can be secured to a shaft using a transverse pin or by parallel key connection together with a DIN 6912 cap screw and a handwheel washer K0173.
By the versions with transverse bore, fixation is carried out using an ISO 4027 grub screw.

Supplied with:

Aluminium handwheel.
Hub cover.
Revolving cylinder grip.
ISO 4027 grub screw (type with transverse bore).

Accessory:

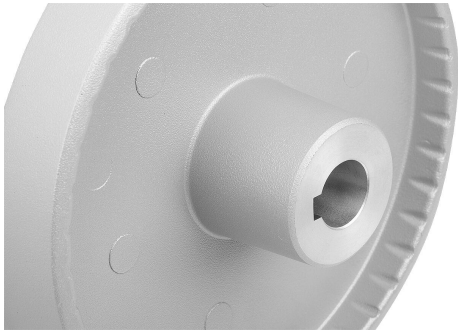
K0173 Handwheel washers.
K1160 Socket head screws with low head DIN 6912.

Drawing reference:

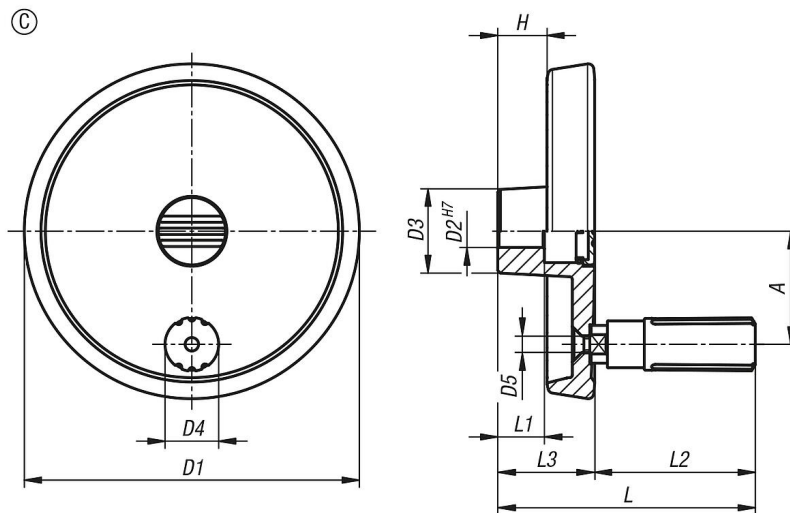
1) Position of the transverse bore to the keyway is offset by 90° .

Disc handwheels, aluminium with revolving cylindrical grip, Form C with reamed hole and keyway

Item description/product images

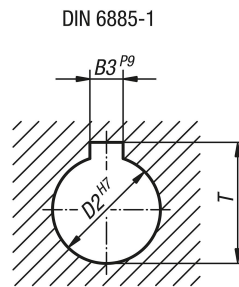


Drawings



Disc handwheels, aluminium with revolving cylindrical grip, Form C with reamed hole and keyway

Drawings



Overview of items

Order No.	Main colour	Form	Form definition	A	D1	D2	D3	D4	L1	L3	H	B3	T	L	L2	D5
K1521.08010103	black	C	reamed hole with slot	27	80	10	26	13,9	16	29	16,6	3	11,4	68	39	M4
K1521.08012104	black	C	reamed hole with slot	27	80	12	26	13,9	16	29	16,6	4	13,8	68	39	M4
K1521.10010103	black	C	reamed hole with slot	33	100	10	28	16	17	33	17,5	3	11,4	81	48	M5
K1521.10012104	black	C	reamed hole with slot	33	100	12	28	16	17	33	17,5	4	13,8	81	48	M5
K1521.12512104	black	C	reamed hole with slot	42	125	12	31	19,9	18	36	18,3	4	13,8	96	60	M6
K1521.12514105	black	C	reamed hole with slot	42	125	14	31	19,9	18	36	18,3	5	16,3	96	60	M6
K1521.08010203	silver	C	reamed hole with slot	27	80	10	26	13,9	16	29	16,6	3	11,4	68	39	M4
K1521.08012204	silver	C	reamed hole with slot	27	80	12	26	13,9	16	29	16,6	4	13,8	68	39	M4
K1521.10010203	silver	C	reamed hole with slot	33	100	10	28	16	17	33	17,5	3	11,4	81	48	M5
K1521.10012204	silver	C	reamed hole with slot	33	100	12	28	16	17	33	17,5	4	13,8	81	48	M5
K1521.12512204	silver	C	reamed hole with slot	42	125	12	31	19,9	18	36	18,3	4	13,8	96	60	M6
K1521.12514205	silver	C	reamed hole with slot	42	125	14	31	19,9	18	36	18,3	5	16,3	96	60	M6