

Disc handwheels, aluminium with revolving cylindrical grip, Form A with reamed hole and transverse bore

Item description/product images



Description

Material:

Handwheel aluminium.
Cylinder grip and hub cover black thermoplastic.
Cylinder grip pin black oxidised steel.
ISO 4027 grub screw, steel grade 45 H, black.

Version:

Black or silver powder-coated.

Note:

Wheel rim radial and axial run-out ≤ 0.4 mm.

Assembly:

The hub cover and the revolving cylinder grip are supplied unassembled. To assemble, screw the grip into the tapped hole.
The handwheels can be secured to a shaft using a transverse pin or by parallel key connection together with a DIN 6912 cap screw and a handwheel washer K0173.
By the versions with transverse bore, fixation is carried out using an ISO 4027 grub screw.

Supplied with:

Aluminium handwheel.
Hub cover.
Revolving cylinder grip.
ISO 4027 grub screw (type with transverse bore).

Accessory:

K0173 Handwheel washers.
K1160 Socket head screws with low head DIN 6912.

Drawing reference:

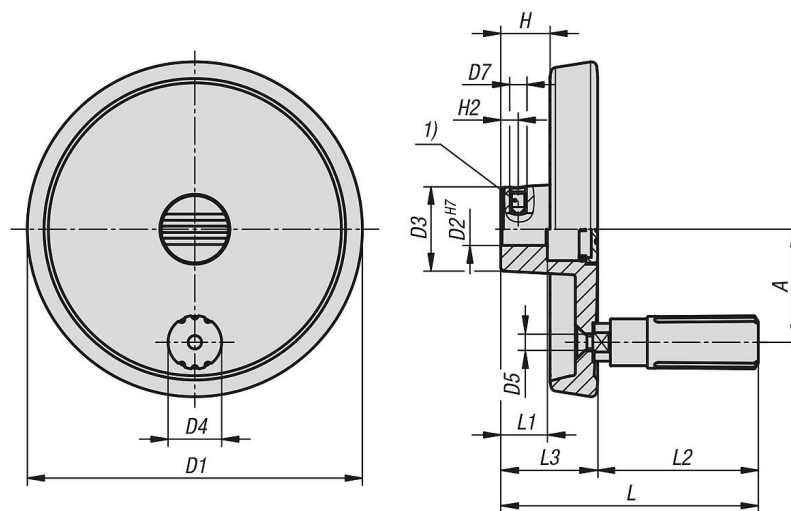
1) Position of the transverse bore to the keyway is offset by 90° .

Disc handwheels, aluminium with revolving cylindrical grip, Form A with reamed hole and transverse bore

Item description/product images



Drawings



Overview of items

Order No.	Main colour	Form	Form definition	A	D1	D2	D3	D4	L1	L3	H	H2	D7	L	L2	D5
K1521.0801016	black	A	reamed hole with tranverse bore	27	80	10	26	13,9	16	29	16,6	5,5	M6	68	39	M4
K1521.0801216	black	A	reamed hole with tranverse bore	27	80	12	26	13,9	16	29	16,6	6,5	M6	68	39	M4
K1521.1001016	black	A	reamed hole with tranverse bore	33	100	10	28	16	17	33	17,5	5,5	M6	81	48	M5
K1521.1001216	black	A	reamed hole with tranverse bore	33	100	12	28	16	17	33	17,5	6,5	M6	81	48	M5

Disc handwheels, aluminium with revolving cylindrical grip, Form A with reamed hole and transverse bore

Overview of items

Order No.	Main colour	Form	Form definition	A	D1	D2	D3	D4	L1	L3	H	H2	D7	L	L2	D5
K1521.1251216	black	A	reamed hole with tranverse bore	42	125	12	31	19,9	18	36	18,3	6,5	M6	96	60	M6
K1521.1251416	black	A	reamed hole with tranverse bore	42	125	14	31	19,9	18	36	18,3	6,5	M6	96	60	M6
K1521.0801026	silver	A	reamed hole with tranverse bore	27	80	10	26	13,9	16	29	16,6	5,5	M6	68	39	M4
K1521.0801226	silver	A	reamed hole with tranverse bore	27	80	12	26	13,9	16	29	16,6	6,5	M6	68	39	M4
K1521.1001026	silver	A	reamed hole with tranverse bore	33	100	10	28	16	17	33	17,5	5,5	M6	81	48	M5
K1521.1001226	silver	A	reamed hole with tranverse bore	33	100	12	28	16	17	33	17,5	6,5	M6	81	48	M5
K1521.1251226	silver	A	reamed hole with tranverse bore	42	125	12	31	19,9	18	36	18,3	6,5	M6	96	60	M6
K1521.1251426	silver	A	reamed hole with tranverse bore	42	125	14	31	19,9	18	36	18,3	6,5	M6	96	60	M6