

Washers with large OD DIN 9021

Item description/product images



Description

Material:

Steel or stainless steel (A 2)

Version:

Electro zinc-plated steel.

Hardness

$D1 \leq 14 = 140 \text{ HV.}$

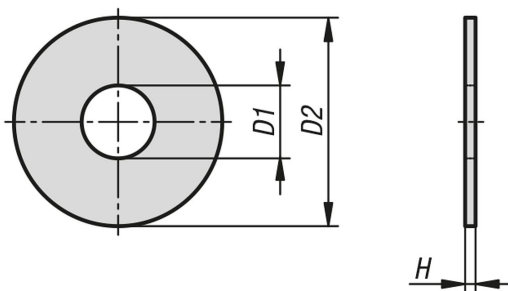
$D1 > 17 = 100 \text{ HV.}$

Stainless steel, bright.

Note:

The pulleys have an OD of $D2 = \sim 3 \times D1$.

Drawings



Overview of items

Washers with large OD DIN 9021

Order No.	Main material	for screws	D1	D2	H
K1150.03	steel	M3	3,2	9	0,8
K1150.04	steel	M4	4,3	12	1
K1150.05	steel	M5	5,3	15	1,2
K1150.06	steel	M6	6,4	18	1,6
K1150.08	steel	M8	8,4	24	2
K1150.10	steel	M10	10,5	30	2,5
K1150.12	steel	M12	13	37	3
K1150.14	steel	M14	15	44	3
K1150.16	steel	M16	17	50	3
K1150.18	steel	M18	20	56	4
K1150.20	steel	M20	22	60	4
K1150.24	steel	M24	26	72	5
K1150.30	steel	M30	33	92	6
K1150.103	stainless steel	M3	3,2	9	0,8
K1150.104	stainless steel	M4	4,3	12	1
K1150.105	stainless steel	M5	5,3	15	1,2
K1150.106	stainless steel	M6	6,4	18	1,6
K1150.108	stainless steel	M8	8,4	24	2
K1150.110	stainless steel	M10	10,5	30	2,5
K1150.112	stainless steel	M12	13	37	3
K1150.114	stainless steel	M14	15	44	3
K1150.116	stainless steel	M16	17	50	3
K1150.118	stainless steel	M18	20	56	4
K1150.120	stainless steel	M20	22	60	4

Washers with large OD DIN 9021**Overview of items**

Order No.	Main material	for screws	D1	D2	H
K1150.124	stainless steel	M24	26	72	5